

# CYLINDER CONTENTS TEST GAUGES

Protect yourself against gas shortages, check the cylinder contents.  
This eliminates the uneasy question of "is it full or not?"



Scan for Current Price Page

## HAND TIGHT

**\$59.95 EA**

**GA-2-510**  
Acetylene



Part No.	CGA FITTING
GA-2-346	Breath AIR (to 3000 psi)
GA-2-510	P.O.L. ACET.
GA-2-540	OXYGEN
GA-2-580	NITROGEN
GA-2-590	IND. AIR / SF6

FOR USAGE 3000 psi AND UNDER (ACETYLENE 350 psi)

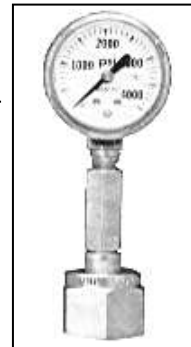


## WRENCH TIGHT

Part No.	UNIT PRICE	Description
TGCB	\$28.50 EA	" B " Acetylene CGA-520
TGCMC	\$28.50 EA	" M C " Acetylene CGA-200
TGCN	\$34.22 EA	Nitrogen CGA-580
TGCO	\$34.22 EA	Oxygen CGA-540

### Nitrogen

(ALSO FITS ARGON, HELIUM AND INERT MIXES)



Oxygen

SOME GASES, SUCH AS CARBON DIOXIDE AND REFRIGERANTS, ARE FILLED BY WEIGHT AND NOT PRESSURE, SO A PRESSURE GAUGE WOULD NOT HELP IN DETERMINING CYLINDER CONTENTS.



**ESAB R-76 Series Heavy-Duty**  
2-1/2" Color Coded Gauges

CO2 - Single Stage  
CGA -320 Inlet  
5/8-18 RH Female "B" Outlet  
0-150 PSI Delivery Pressure  
  
#19629  
\$205.00 Ea.



**ESAB R-72 Series Medium-Duty**  
2-1/2" Color Coded Gauges

Nitrogen - Single Stage  
CGA -580 Inlet  
1/4" M Flare Outlet  
0-125 PSI Delivery Pressure  
  
#0558005416  
\$97.95 Ea.

ESAB manufactures a complete line of regulators that are unsurpassed in their field for safety and capacity, with patented built-in explosion protection. All ESAB regulators are built from top quality materials and are designed to provide safe, efficient gas control in applications ranging from light-duty maintenance and repair to heavy-duty production. ESAB's Gas Apparatus Lifetime Warranty applies to Oxtel®, Purox® and Prest-O-Lite® regulators and covers manufacturer defect in materials and workmanship as well as normal wear and tear.

# HIGH VOLUME CARBON DIOXIDE REGULATORS/HEATERS

## VICTOR®



SR regulator is specifically designed for use with standard (non-siphoned) carbon dioxide cylinders. Unique design permits flow rates up to 200 SCFH without freeze-up or noticeable change in pressure or flow.

Dimensions: 8-3/8"W x 7-1/4"H x 2-1/2"D  
Weight: 2 lbs. 15 oz.



Part No. SR311-320

### DESIGN/CONSTRUCTION

- Machined body and housing cap
- 2" Gauges
- Stem type seat mechanism
- 1-3/4" Diaphragm
- Self reseating relief valve (Not designed to protect downstream apparatus)
- Sintered Inlet filter

### SPECIFICATIONS PERFORMANCE

Maximum Inlet..... 1500 PSIG  
Maximum flow ..... 200 SCFH  
  
NOTE: Regulators will deliver at least the stated upper range at no flow and in some cases may exceed the stated upper range.

### MATERIALS

Body.....Aluminum  
Diaphragm.....Fabric Reinforced Neoprene  
Housing cap.....Aluminum  
Inlet filter.....Bronze

**\$527.15 EA**

### ORDERING INFORMATION

GAS SERVICE	PART NUMBER	DELIVERY RANGE	SPECIFY CGA INLET CONNECTION
CO <sub>2</sub>	SR311-320	10-150 PSIG	320
OUTLET CONNECTION 5/8"-18 (F) R. H.			



**\$326.50 EA**

## Electrically Heated Regulator/Flowmeter

Part No. 198C

PRESET at 50 PSI OUTPUT  
5/8"-18 RH Female THREAD OUTLET

CAUTION: Use this regulator only with non-siphoned standard CO<sub>2</sub> cylinders

- Built-in thermostatically controlled electric heater keeps the CO<sub>2</sub> warm, allowing for a continuous duty cycle without freezing. 110VAC / 190W heater is standard.

Gas Service	Part Number	Maximum Delivery Flow (SCFH)	Inlet	
			Connection	Gauge
Carbon Dioxide	198C	0-60	CGA 320	2" X 4000 PSI

Part No. CO2H

CO<sub>2</sub> Heater  
120 Volt AC/60hz.

**\$142.50 EA**

The most **ECONOMICAL** Thermostatically controlled CO<sub>2</sub> Heater, designed to prevent CO<sub>2</sub> regulator Freeze-Up. Extends life of regulator/flowmeter and prevents porosity in welds from loss of shield gas in frozen regulator. Easily installed between CO<sub>2</sub> cylinder valve and flowmeter or regulator.

**CAUTION: AVOID BURNS! EXTERIOR OF HEATER WILL BECOME HOT WHILE IN USE. DO NOT TOUCH WITHOUT ADEQUATE SAFETY PROTECTION**

The electric carbon dioxide heater is intended for use on 115 volt, 60 hertz, single phase alternating current ONLY. It is not insulated for outdoor use and, therefore, must be protected from moisture and weather or climatic conditions which could cause electrical equipment to become a hazard. Use only with a 3-wire, grounded, electrical extension cord and socket.

Withdrawal rates of 20 scfh or more can result in the withdrawal of liquid carbon dioxide from a cylinder or relief of the gas, prior to its entry into a carbon dioxide flowmeter/regulator combination unit.

The totally-enclosed heating element combined with a thermostatic control prevents overheating and possible damage to the regulator.

Use the CO<sub>2</sub> heater between the cylinder valve and the regulator. Fiber washers must be used on both CGA 320 connections. Use on carbon dioxide gas withdrawal cylinder only. **DO NOT** use on liquid carbon dioxide withdrawal cylinders.

Model (Part) Number: CO2H  
Material: Aluminum Case & Solid Brass Expansion Chamber  
Dimensions: 2" Diameter, 8" Over All Length  
Fittings: Solid Brass for CO<sub>2</sub> Cylinders, CGA 320  
Electrical: 115 Volts, 60 hertz, Single Phase  
Power Consumption: 100 Watts  
Capacity: 90 scfh

