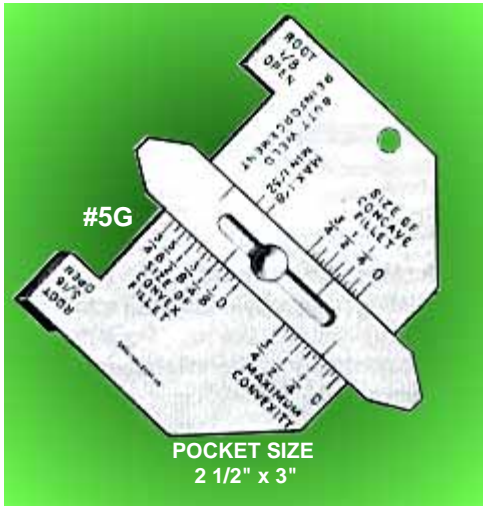


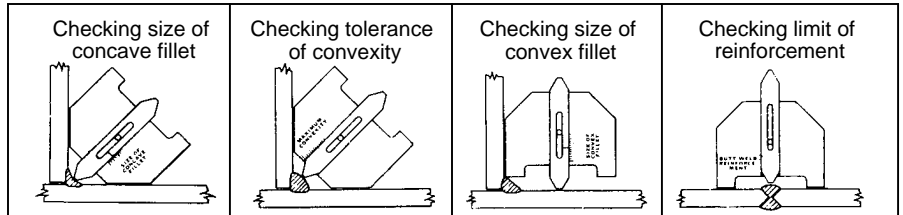
LAYOUT TOOLS and MARKERS



**PALMGREN** \$49.60 EA

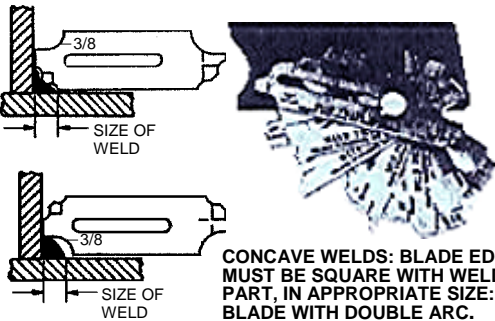
**No. 5G WELD GAUGE**

For accurate calibration of butt and fillet type welds. The finest welding gauge ever developed. Enables a welder to meet exact specifications of butt and fillet type welds, and accurately check sizes of convex or concave fillets as well as permissible tolerance of butt weld reinforcements.



**WELD FILLET GAUGE - WFG11**

- ❖ PRECISION GAUGE
- ❖ TIME SAVING
- ❖ COVERS ELEVEN SIZES 1/8, 3/16, 1/4, 5/16, 3/8, 7/16, 1/2, 5/8, 3/4, 7/8, 1"
- ❖ CONSTRUCTED OF RUST PROOF BEND PROOF 22 GAUGE, TYPE 304 STEEL
- ❖ DIE BLANKED TO ELIMINATE SHARP EDGES AND ADD TO ACCURACY
- ❖ PERMANENTLY ETCHED AND BLACK FILLED LETTERING FOR LONG LIFE AND ABRASION RESISTANCE



CONCAVE WELDS: BLADE EDGE MUST BE SQUARE WITH WELDED PART, IN APPROPRIATE SIZE: USE BLADE WITH DOUBLE ARC.

CONVEX WELDS: BLADE EDGE MUST BE SQUARE WITH WELDED PART, IN APPROPRIATE SIZE: USE BLADE WITH SINGLE ARC.

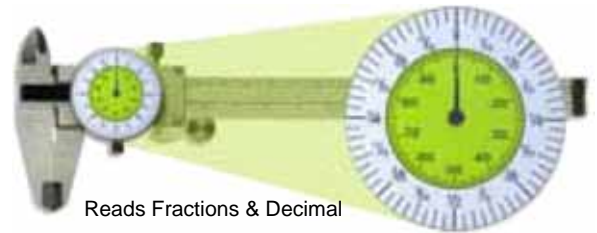
WFG11

\$32.95 EA

**6" STAINLESS STEEL CALIPER**

Direct Reading 0-1.00" Scale  
.001" Accuracy Over 6" Travel  
4-Way Measurement: Inside Outside, Depth and Step

No. MCDF00006 \$34.95 EA



**SUMNER**

The Perfect Fit-Up Tool for Steel Plate

**Fit Stix**

The first professional tool for aligning steel sheet or plate! Throw away bent screwdrivers and auto springs and use the perfect tool for aligning mismatched plate steel. With only one hand and the Sumner Fit Stix, the welder can lift one steel sheet while pressing down the matching piece. No adjustments needed... it's quick, easy and accurate! The Fit Stix can even set the weld gap. If you work with steel plate you will use this tool daily. Pipe welders can also use the Fit Stix on thin wall pipe!

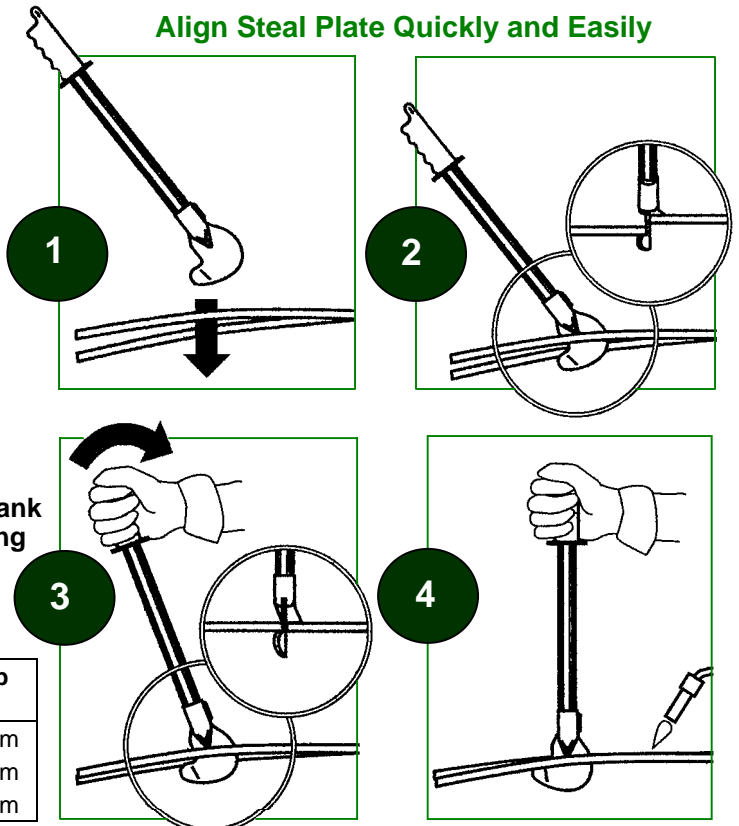
- 1) Head thickness is the same as weld gap
- 2) Hook on Alignment Head lifts one plate
- 3) Head Stop Presses matching plate down

The Fit Stix comes in three sizes depending on steel thickness, and the two smaller models will fit easily in most tool boxes.

Heavy-wall shank to resist bending

Drop forged alignment head

Align Steel Plate Quickly and Easily



PRICE	Part No.	Description	Maximum Plate Thickness	Weld Gap Setting
\$42.15 EA	781850	Fit Stix #3	1/8" 3 mm	1/16" 1.5 mm
\$45.00 EA	781860	Fit Stix #8	5/16" 8 mm	5/64" 2.0 mm
\$52.00 EA	781870	Fit Stix #12	1/2" 12 mm	3/16" 4.0 mm